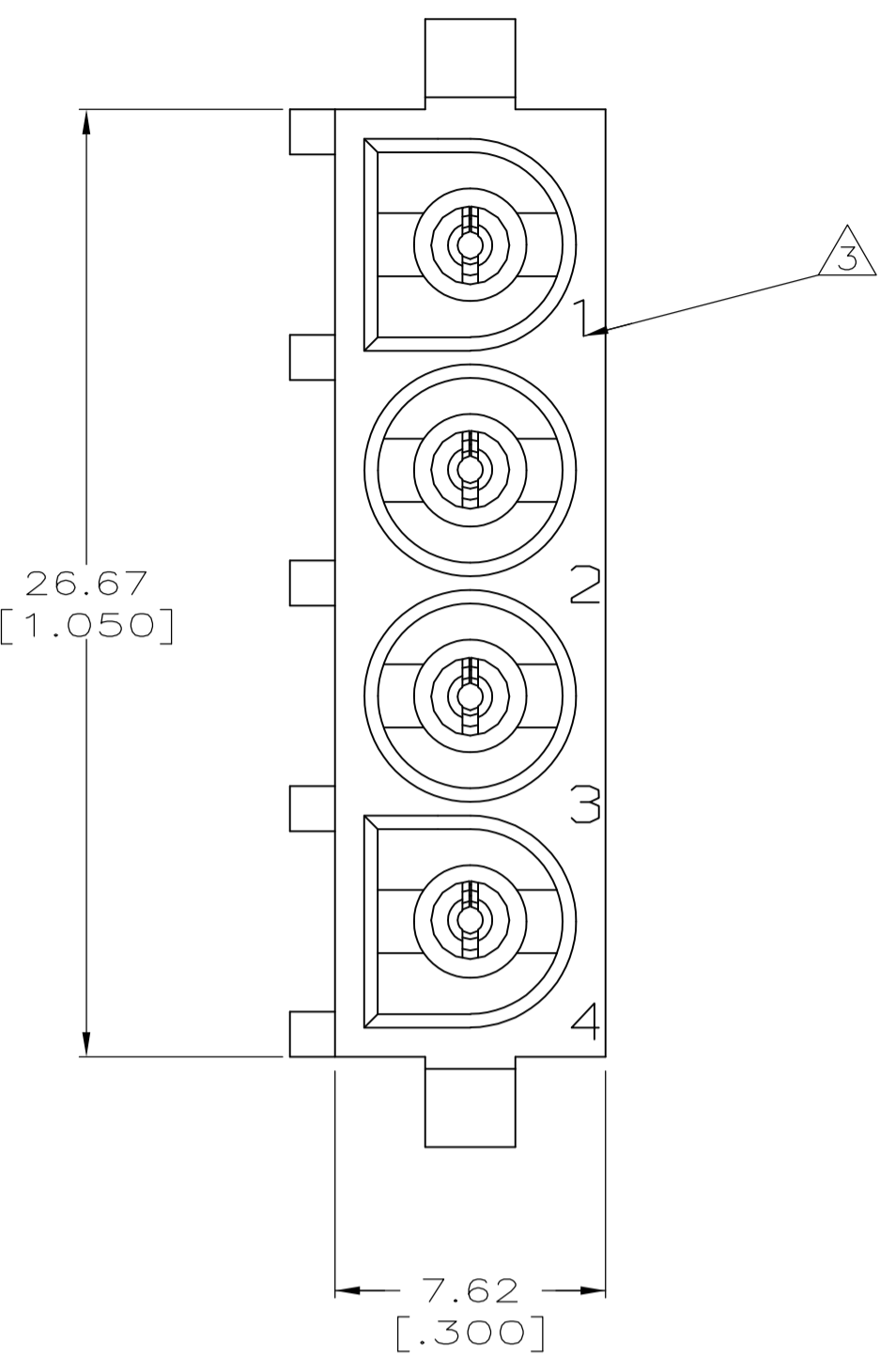
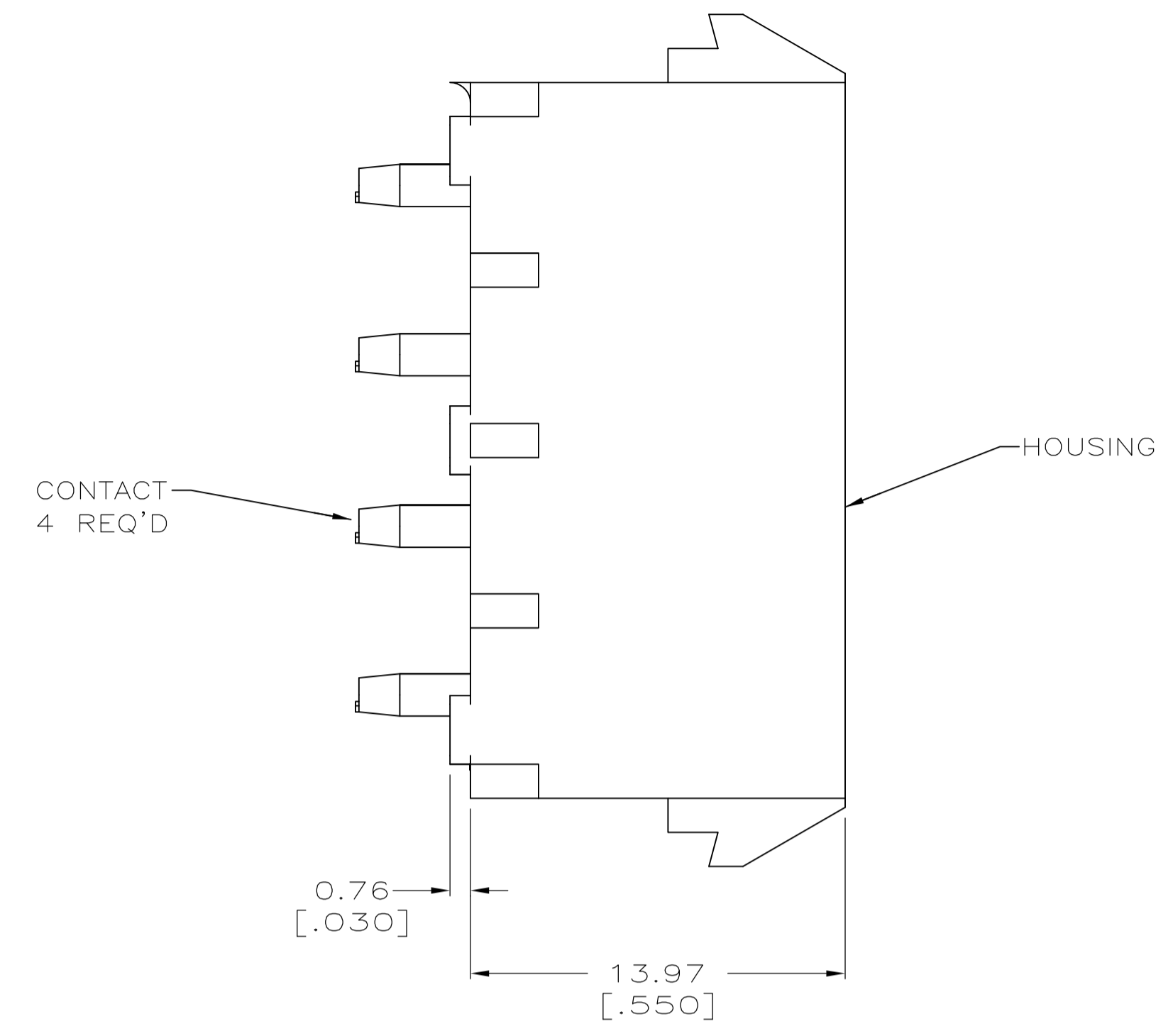
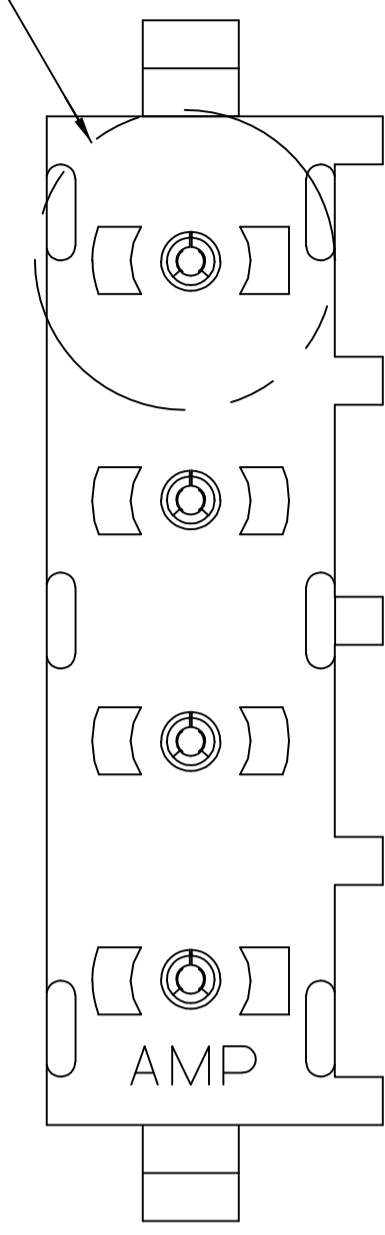
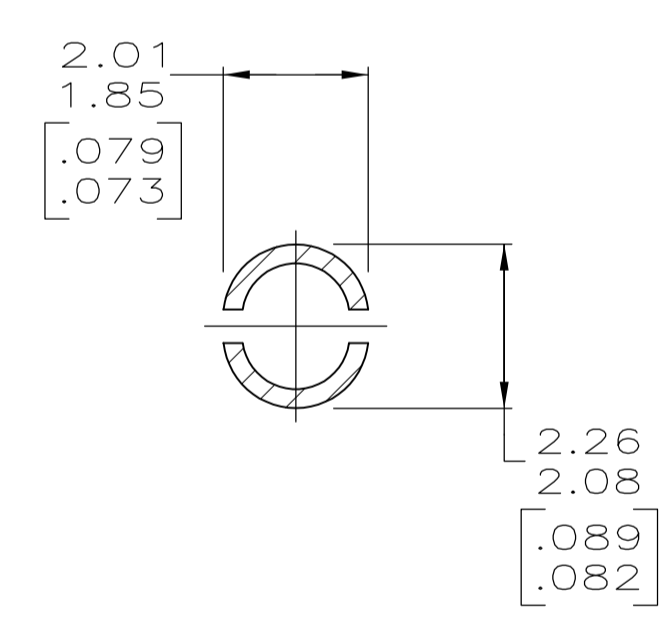
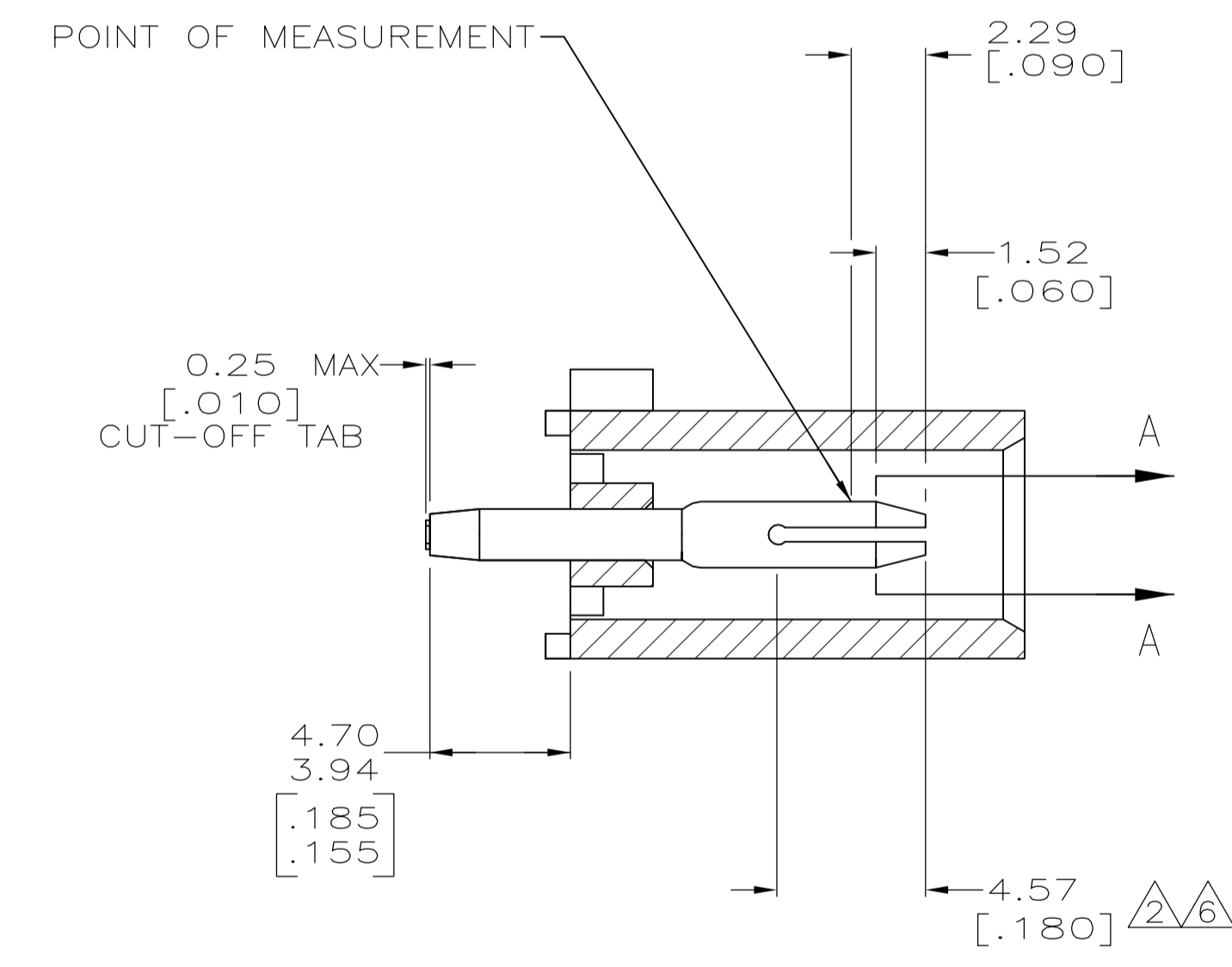


LOC		DIST		REVISIONS			
P	LTR	DESCRIPTION	DATE	DNW	APVD		
A		ECO-07-015165	07AUG07	KW	DC		

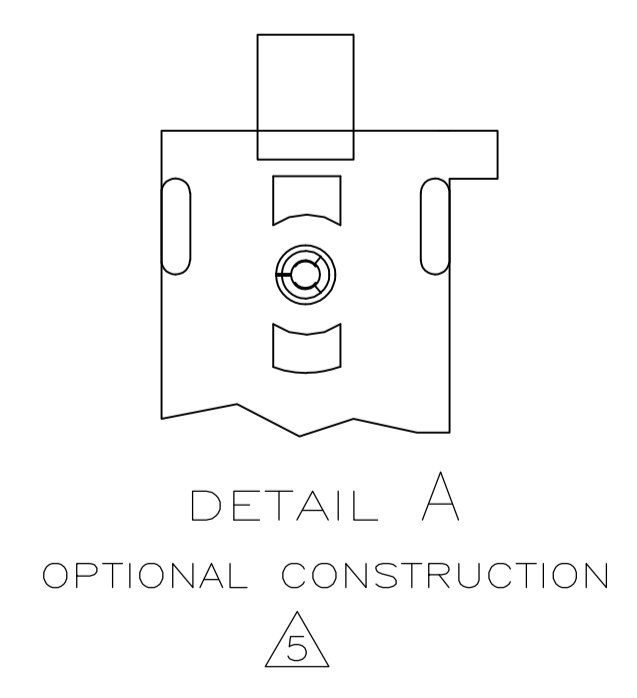
SEE DETAIL A



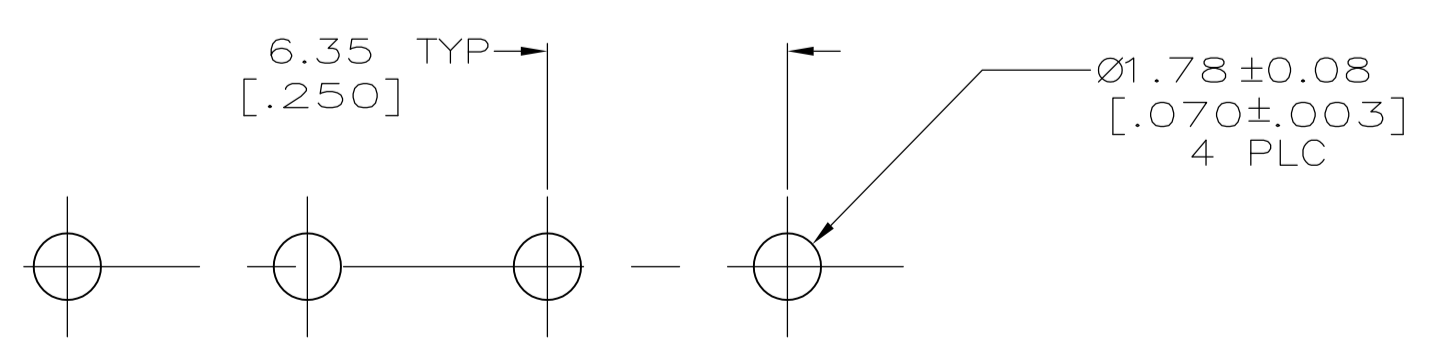
- PARTS COMPLY TO AMP SOLDERABILITY SPECIFICATION 109-11-3.
- GLOW WIRE APPROVED, CONTACT TYCO ELECTRONICS ENGINEERING FOR SPECIFICATION.
- CIRCUIT IDENTIFICATION CHARACTERS ARE ADJACENT TO THE INDICATED CAVITIES, BUT LOCATION AND ORIENTATION MAY DIFFER FROM PRINT.
- DIMENSIONS IN BRACKETS ARE IN INCHES.
- DRAIN HOLES LOCATED AS SHOWN. OPTIONAL CONSTRUCTION - ALL DRAIN HOLES LOCATED 90° AS SHOWN IN DETAIL A.



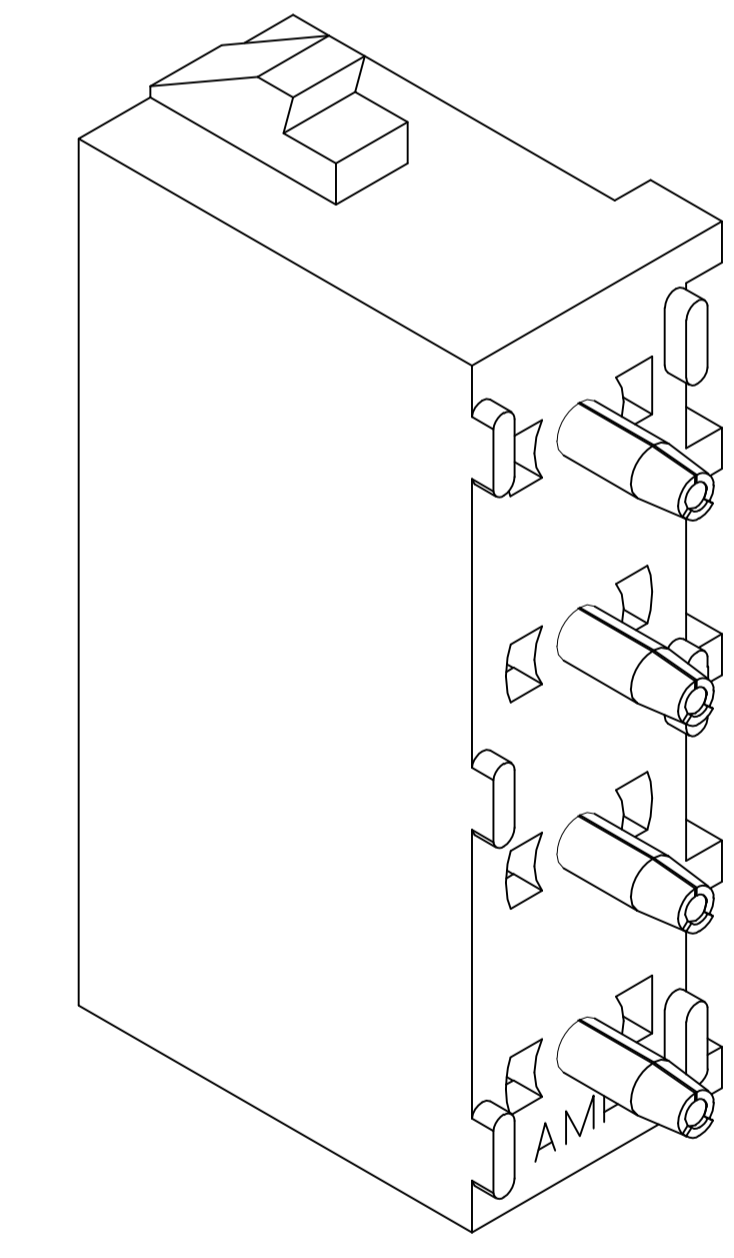
SECTION A-A  
SCALE 10:1



DETAIL A  
OPTIONAL CONSTRUCTION



RECOMMENDED MOUNTING HOLE PATTERN  
FOR 1.57 [.062] THICK P.C. BOARD



3-DIMENSIONAL MODEL  
NTS

PHOSPHOR BRONZE, PRE-TIN	NYLON, UL94V-2,NATURAL	1586963-1
PIN CONTACT MATERIAL AND FINISH	HOUSING MATERIAL	PART NUMBER
THIS DRAWING IS A CONTROLLED DOCUMENT.		DIN K. WHITAKER 07AUG2007
DIMENSIONS: mm [INCHES]		CHK D. COLEY 07AUG2007
TOLERANCES UNLESS OTHERWISE SPECIFIED:		APVD D. COLEY 07AUG2007
0 PLC ± -	1 PLC ± -	NAME
2 PLC ± 0.13 [.005]	3 PLC ± -	PRODUCT SPEC
4 PLC ± -	ANGLES ± ± 0°30'	APPLICATION SPEC
MATERIAL SEE TABLE	FINISH SEE TABLE	SIZE CASE CODE DRAWING NO
		WEIGHT
		A1 00779 C=1586963
		CUSTOMER DRAWING
		SCALE 5:1 SHEET 1 OF 1 REV A

